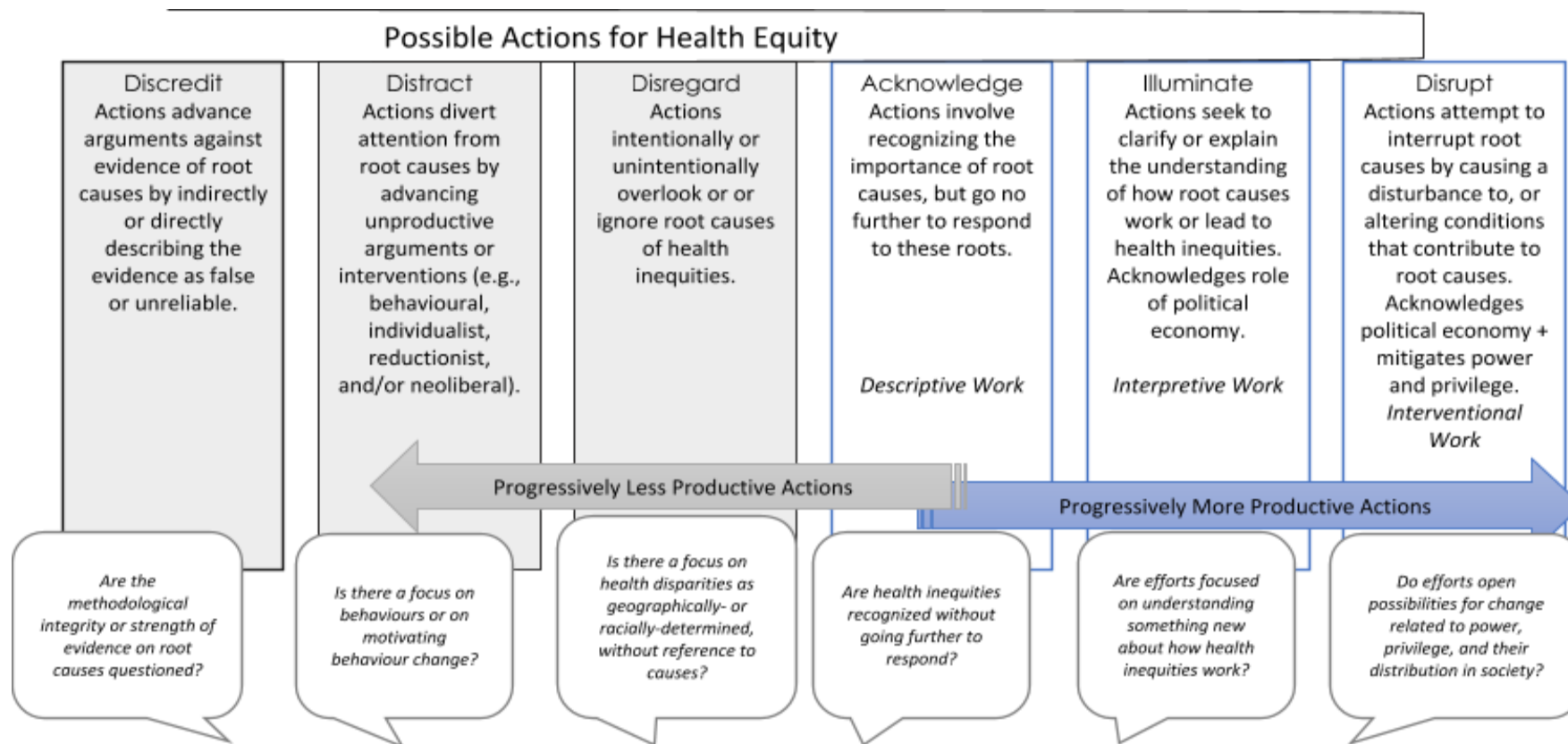


## BCCI2: Mobilizing our Commitment to the Future through Equity

### Worksheet

1-minute Journal	
<ul style="list-style-type: none"> <li>• Why did you get into this field?</li> <li>• Intentions? What are your primary motivations?</li> <li>• How would you rate the alignment between what your intentions are and what you do?</li> </ul>	
<p><b>Health equity</b> means all people (individuals, groups and communities) are able to reach their full health potential and <b>are not disadvantaged by social, economic and environmental conditions.</b>            NCCDH Glossary of Essential Health Equity Terms <a href="http://nccdh.ca/resources/glossary/">http://nccdh.ca/resources/glossary/</a></p> <p><b>Climate justice</b> links human rights and development to achieve a human-centred approach, <b>safeguarding the rights of the most vulnerable and sharing the burdens and benefits</b> of climate change and its resolution <b>equitably and fairly.</b>            Mary Robinson Foundation: Principles of Climate Justice <a href="https://www.mrfci.org/principles-of-climate-justice/">https://www.mrfci.org/principles-of-climate-justice/</a></p>	
How are health equity, health inequities, and climate inequities framed?	
<p><b>We naturalize health inequities by...</b></p> <ul style="list-style-type: none"> <li>• Not referring to evidence about causes</li> <li>• Explaining them as mysterious or the result of bad luck</li> <li>• Focusing on symptoms</li> <li>• Placing blame (root causes) in individuals</li> <li>• Blaming culture or ethnicity rather than -isms</li> </ul>	<p><b>We problematize health inequities by...</b></p> <ul style="list-style-type: none"> <li>• Explicitly naming causes</li> <li>• Describing them as actionable (i.e, human-caused and therefore humans can respond)</li> <li>• Stating that they are unfair or tied to unearned advantages and disadvantages</li> <li>• Shaped by political economy</li> <li>• Situate them in social systems of power</li> </ul>

Assessing orientations to root causes of inequities and climate justice)



**Articles & Media for Groupwork**

1. Discuss and decide whether it naturalizes or problematizes (bullet points about why)
2. Discuss and decide where it falls on the spectrum of possible actions on root causes
3. Make a recommendation about something that would move it toward productive action

**Group 1:**

<https://blackdissidents.wordpress.com/2015/12/16/open-letter-from-the-wretched-of-the-earth-bloc-to-the-organisers-of-the-peoples-climate-march-of-justice-and-jobs/>

**Group 2:**

<https://greennewdealgroupp.org/a-social-and-green-new-deal-to-reverse-the-populist-tide/>

**Group 3:**

<http://www.carlineconomics.com/archives/5068>

**Group 4:**

<https://www.youtube.com/watch?v=TbtdlB5DiiY> (start around 2:30; especially “interesting” around 5:00...)

**Group 5:**

[https://www.thelancet.com/journals/lanplh/article/PIIS2542-5196\(17\)30176-6/fulltext](https://www.thelancet.com/journals/lanplh/article/PIIS2542-5196(17)30176-6/fulltext)

**Think-Pair-Share**

What is one thing you can do to better align your intention and action *or* move toward an even more productive action?